

WELCOME

EXPLORER

USE THIS GUIDE TO CREATE A REPORT BACK TO YOUR OWN KINGDOM ABOUT WHAT YOU HAVE DISCOVERED!



Trees are an important part of life for animals. Pick one type of tree, take a photo and then document some observations here:

Does the bark feel smooth or rough? _____

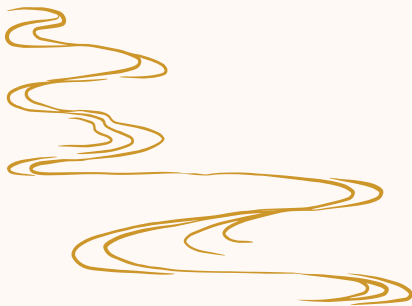
Are the leaves big or small? _____

What could people use this tree for?

What could animals use this tree for?

Exploring scientists document the plants they see in a new area.

Sketch one plant with a flower here. Remember to include things like the leaf shape and number of petals!



Water is an important part of life, document some important information about the water here!

Is it clear? _____

Is it moving or still? _____

What do you see in the water? Any animals or plants?

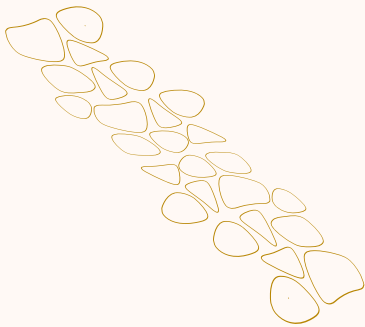
Photo: Take a video of a waterfall (the ones here are small!) to document how water moves in this area!



This area was once a shallow sea! Most of the rocks you see around are **limestone** that was created by the creatures and sediment from this sea.

Find evidence of this shallow sea and take a photo!

Hint: This evidence is usually shells! It takes some careful looking to find them!



You are navigating your exploration on paths built by special supporters of this place - **trail volunteers!** Take a photo of some of the crossings you are using to navigate the trails! These could be stone or wooden pathways.

What evidence do you see that animals also use these trails?

Bonus: Take a group photo on one of your favorite crossings!



A famous plant of the refuge is the **Ashe Juniper** tree. There are both male and female trees. The females have berries and the male trees have pollen.

Find an Ashe Juniper tree and take a photo!

Bonus: Ashe Juniper trees over 20 years old have shaggy bark. Find and photograph this shaggy bark! What do you think birds use this for? _____



This place is especially designed to provide birds everything they need to live! Look around to find the following things and take a photo to document each one:

- Something that birds like to **eat**
- Somewhere the birds can drink **water**
- Something birds can use for their **nests**
- Somewhere that birds might like to **build** their nests