

*The Magical Kingdom of  
Balcones Canyonlands National  
Wildlife Refuge*



1174



*King Raccoon's  
Town Square*



*Princess Juniper's  
Woodland*



*Prince Frog's  
Stone Island*



*Magic Butterfly  
Tree*



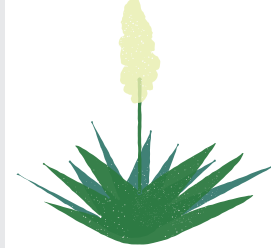
*The Wizard's  
Crossing*



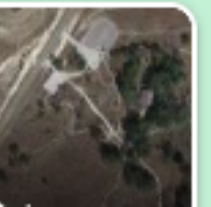
*The Water Fairy  
Pond*



*Queen Fox's  
Overlook*



*The Prickly  
Prairie*



*Welcome to the Balcones Canyonlands Magical Kingdom! Document your trip around this magical kingdom by visiting each location below and taking the photo that is noted below!*

*Remember that everything you see belongs to the animals so only take photos and leave everything else!*



*King Raccoon's  
Town Square*

Animals often use the same paths that people do, it is easier than walking through the brush! **Scat** is animal poop and one way we can tell who has been here. Take a photo of some animal scat you see on the trail!



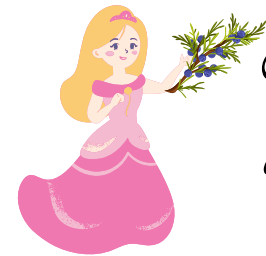
*Prince Frog's  
Stone Island*

One of the frogs that lives here is the **cricket frog!** They love the areas with water. Take a picture of yourself in your best frog pose!



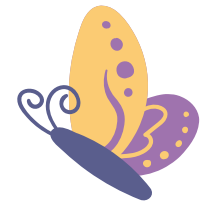
*The Wizard's  
Crossing*

Butterflies love the shallow water in this crossing. Capture a photo of a butterfly! If none are around, take a picture on the crossing of your best wizard pose!



*Princess Juniper's  
Woodland*

The trees in this area are called **Ashe Juniper** (sometimes people call them "cedar"). There are both male and female trees. The females have berries. Take a photo of a female Juniper tree, or some berries!



*Magic Butterfly  
Tree*

The biggest tree you can find at this spot is an **oak tree!** Butterflies like to roost in this tree during migrations. Take a picture of the bark of the tree and imagine all the butterflies that have landed there!



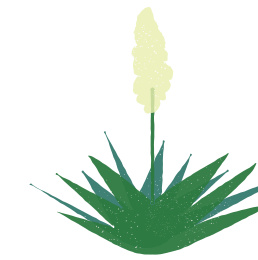
*The Water Fairy  
Pond*

Plants and animals need water to survive, so this pond is important! Take a look at the plants around the pond and take a picture of your favorite plant.



*Queen Fox's  
Overlook*

You will get a very good view of the Refuge from here - take a group photo with everyone together!



*The Prickly  
Prairie*

Many plants that live on the Refuge are very spiny! Take a picture of your favorite pokey plant. Why do you think it is good for a plant to have sharp points?

